



# **INSTRUCTIONS**

# **USB MODULE**

for use with WSIQ2/WSE

WorldWide Electric Corporation  
Phone: 1-800-808-2131  
Fax: 1-800-711-1616  
[www.worldwideelectric.net](http://www.worldwideelectric.net)

## Product Compatibility

This communications module is suitable for use with WSIQ2 and WSE soft starters.

<b>Product Description</b>	<b>Soft starter name</b>
Digital soft starter	WSIQ2
Compact soft starter	WSE

For the latest manuals and software, please visit our website.

## Contents

1	Disclaimer .....	1
2	Important User Information .....	1
3	Introduction .....	2
4	Installation .....	2
5	Connection .....	3
6	Configuration.....	3
7	Specifications .....	5

### 1 Disclaimer

The examples and diagrams in this manual are included solely for illustrative purposes. The information contained in this manual is subject to change at any time and without prior notice. In no event will responsibility or liability be accepted for direct, indirect or consequential damages resulting from the use or application of this equipment.

### 2 Important User Information

Observe all necessary safety precautions when controlling the soft starter remotely. Alert personnel that machinery may start without warning.

It is the installer's responsibility to follow all instructions in this manual and to follow correct electrical practice.

### 3 Introduction

The USB Module lets the soft starter connect to a PC, allowing the starter to be configured via dedicated management software.

These instructions detail the installation, set-up and configuration of the USB Module. For details on using the management software, refer to the software help file.

### 4 Installation

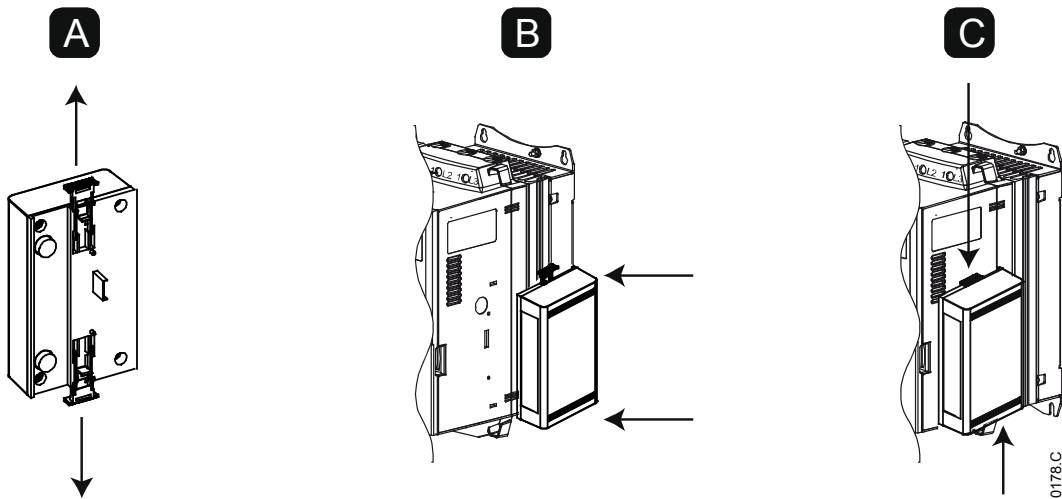


#### CAUTION

Remove mains and control voltage from the soft starter before attaching or removing accessories. Failure to do so may damage the equipment.

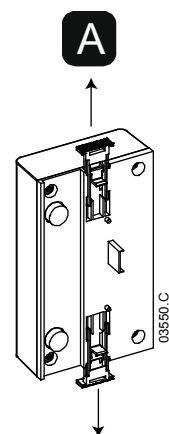
#### 4.1 Installation Procedure

1. Remove control power and mains supply from the soft starter.
2. Fully pull out the top and bottom retaining clips on the module. [A]
3. Line up the module with the comms port slot. [B]
4. Push in the top and bottom retaining clips to secure the module to the starter. [C]
5. Apply control power to the soft starter.



Remove the module using the following procedure:

1. Remove control power and mains supply from the soft starter.
2. Take the module off-line.
3. Disconnect all external wiring from the module.
4. Fully pull out the top and bottom retaining clips on the module. [A]
5. Pull the module away from the soft starter.



## 5 Connection

For successful operation, links must be fitted across terminals on the soft starter.

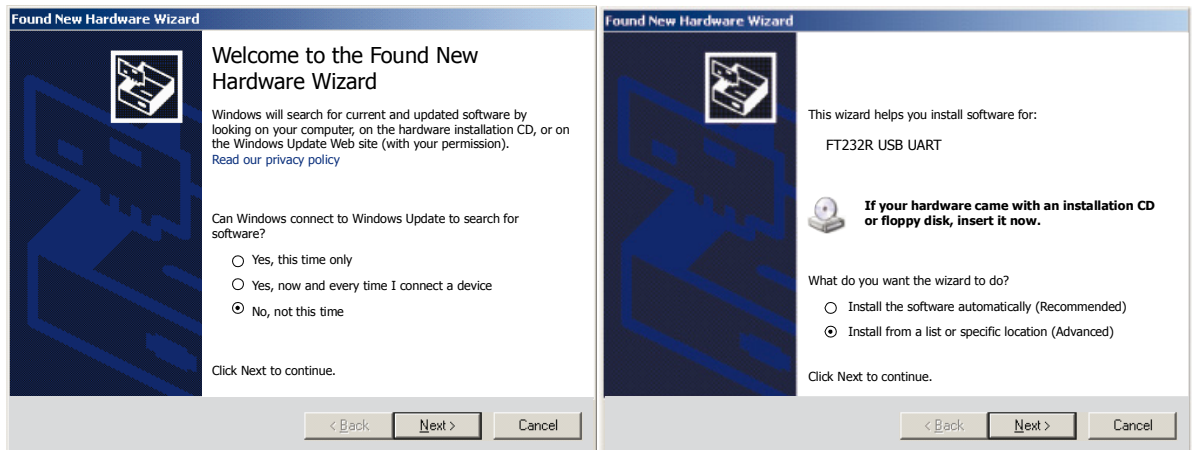
Compact soft starter		Advanced soft starter	
1	Soft starter A1, 02: Stop input	1	Soft starter (Remote mode) C31, C32: Stop input C41, C42: Reset input
2	USB Module	2	USB Module
3	USB port	3	USB port

## 6 Configuration

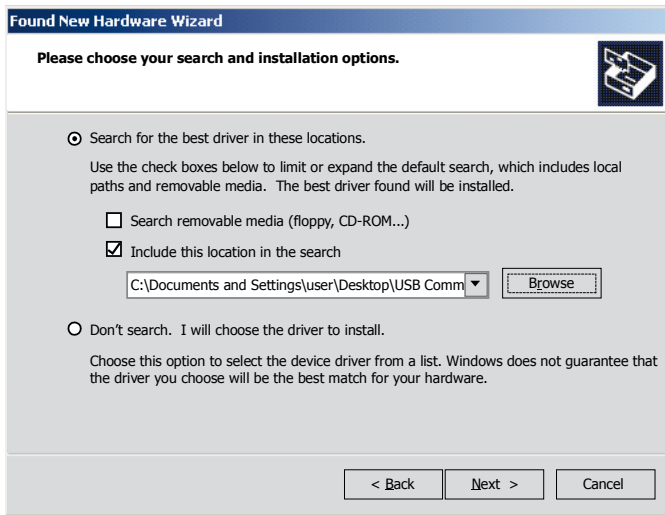
The USB Module requires a driver to operate correctly. Contact your local supplier for the latest version of the driver.

To bring the USB Module on-line:

1. Remove control power and mains supply from the soft starter.
2. Attach the module to the soft starter.
3. Connect the module to the PC via a USB cable. The PC should detect the module and the Hardware Update Wizard will open.
4. Install the USB driver to operate the module as follows.



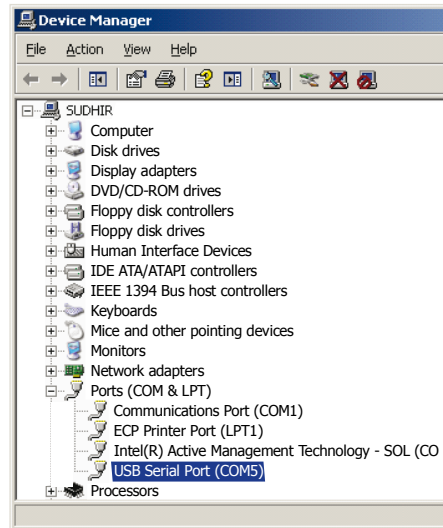
08588.A



08589.A

Click on Ok, then Next. The software will install. If you see a prompt, click Continue Anyway. Once installation is complete, click Finish.

5. The PC will prompt you to install serial port driver software. Repeat the procedure in Step 4. You may need to restart your PC once the driver software is installed.
6. Identify the USB Serial Port assignment by checking Control panel > System > Hardware > Device Manager > Ports (COM & LPT).



08590.A



**NOTE**

If the USB port is not shown, disconnect then reconnect the cable. If the problem persists, restart your PC.

7. Open WinMaster and change the settings as follows:

Protocol: AP ASCII or AP Binary  
 Baud rate: 9600  
 Address: 20  
 Port: Use the serial port number identified above

8. Apply control voltage to the soft starter and bring the Master on-line.



**NOTE**

The starter may trip on Starter Comms while the Master is off-line. Reset the soft starter and place the Master on-line.



**NOTE**

The drivers will configure the USB port that the module is connected to. You must use the same physical USB port every time you connect the module to the PC.

## 7 Specifications

### Enclosure

Dimensions .....	40 mm (W) x 166 mm (H) x 90 mm (D)
Weight .....	250 g
Protection .....	IP20

### Mounting

Spring-action plastic mounting clips (x 2)

### Connections

Soft starter .....	6-way pin assembly
Network .....	USB-B
Maximum cable length .....	3 metres (not supplied)

### Settings

Protocol .....	AP Binary or AP ASCII
Address .....	20
Data rate (bps) .....	9600

